



CART-LESS SOLUTIONS



EXECUTIVE
SERIES™

ELEVATE YOUR IMAGE

WHEN IMAGE IS EVERYTHING, CART-LESS IS KEY

Around the clock, 365 days a year, your staff works diligently to maintain a neat, clean appearance throughout your facility. This ensures your guests and visitors experience the comfort and cleanliness they expect 24/7.

Rubbermaid Commercial Products is proud to introduce Quick Cart and X-Cart, the industry's most durable mobile cart solutions that empower staff to maintain areas discreetly and efficiently.

CART-LESS is designed to:

- *Provide a premium guest experience, keeping the cleaning process hidden from view of guests*
- *Easily move throughout the property with a lightweight, compact, and durable construction*
- *Deliver a flexible solution, customizable for the unique needs of your property*



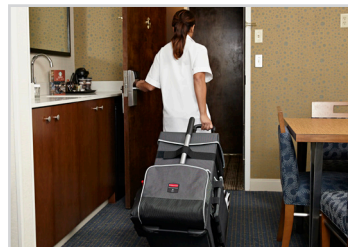
CART-LESS SOLUTION BENEFIT

Ergonomic design and innovative features provide superior cleaning solutions.



Discreet Appearance

Compact design remains inconspicuous by blending into public areas and disappearing into guest rooms.



Compact and Ergonomic Design

Lightweight and more compact than traditional carts for easier maneuverability in tight spaces.



Versatility

Versatile compartments allow for multiple configurations and uses, including housekeeping, maintenance, and more.

QUICK CART



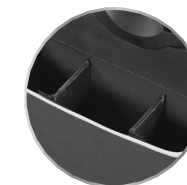
Rubbermaid Quick Cart is the industry's most durable mobile cart solution for housekeeping, janitorial and maintenance environments. Constructed with high-performance materials for added strength and durability, this compact cart withstands rigorous daily use. Treated with DuPont™ Teflon® fabric protector, Rubbermaid Quick Cart repels water, oil and stains, to greatly extend the life of the cart. Additional features that make Quick Cart the best in durability include:

- **ALUMINUM TELESCOPING HANDLE** is dependable for heavy daily use
- **ROBUST BALL-BEARING WHEELS** are designed for reduced noise and heavy-duty use
- **INNER LINER** is treated with Teflon® fabric protector and is removable for easy cleaning or replacement



Repels Water, Oil, and Stains

Teflon® fabric protector helps maintain Quick Cart aesthetics and protects from rigorous daily use.



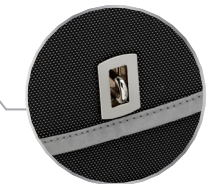
ADJUSTABLE DIVIDERS
Dividers can be moved or removed to create multiple compartments to meet your specific cleaning needs.



REMOVABLE CARRY CADDY
Rigid dividers improve efficiency, keeping amenities and supplies organized.



SECURED STICK GOODS
Heavy-duty fastening strap wraps around supplies to keep them secure while the cart is in motion.



SECURE SUPPLIES
Durable lid conceals supplies and features hardware for adding a lock to prevent unauthorized access to cart and its contents.



Heavy-Duty Kick Plate

Reinforced rubberized kick plate for increased durability and reduced wear and tear.



1902465 Executive Quick Cart – Large

Rubbermaid Collapsible X-Cart is an industry leading weight-load and space saving basket truck solution. Designed for efficient collection and transport of linen, terry, recycling, and much more. Engineered to withstand the demands of continual daily use with upscale appearance.

Additional features designed to make X-Cart the best in durability include:

- **POWDER-COATED STEEL FRAME** with bag support transports large bulky loads up to 220lbs. (8-Bushels)
- **FOLDS DOWN TO 4.5" WIDE** to provide compact storage
- **HEAVY-DUTY VINYL BAG** is designed for easy cleaning
- **QUIET CASTERS** roll smoothly for discreet maneuvering throughout a property
- **DISCREET COVER** provides a quick access top flap that secures in place to hide contents during transport (optional accessory)



COLLAPSIBLE FRAME



Minimize Storage Footprint

Compact, collapsible frame enables efficient storage for improved organization. The cart's footprint reduces by 75% to just 4.5" wide when collapsed. Unit stands upright in the collapsed position.



Industry Leading Capacity

With industry-leading capacity of up to 220 lbs., the versatile Collapsible X-Cart system delivers reliable, long-lasting performance and superior maneuverability to increase worker productivity.



Enhanced Image

Reduce noise during transport with premium, quiet casters. Discreet colors, sleek design, and optional cover to conceal supplies provide professional appearance and enhance image.



CART-LESS SOLUTION SETS

HOUSEKEEPING

Discreet, lightweight and compact design stays hidden from guests' view.



BENEFITS & APPLICATIONS

- Compact for easy storage and transport in a guest room
- One-third the footprint of a traditional housekeeping cart, making it effortless to take into a guest's room to keep hallways clear and uncluttered
- Large front pocket fits sweeper or flexible flat mop storage
- Removable Caddy to store commonly used amenities
- Great as a Housekeeping Managerial Cart when double checking guest rooms
- Great for Turndown services when minimal supplies are needed

SURFACE CLEANING

- **1863890** 12" Brown Multipurpose Microfiber Cloth
- **FGQ85200WH00** 22" Multipurpose Flexible Microfiber Duster and Frame



HARD FLOOR CARE & SAFETY

- **1867396** 11" Microfiber Flexible Flat Mop Frame, Single-Sided
- **1863883** 20" to 40" Telescoping Handle
- **FGQ89100BL00** Microfiber Damp Mop Cover
- **FGQ86100WH00** Microfiber Hi-Pile Cover
- **FGQ87100BL00** Glass Mop Cover



LINEN & WASTE MANAGEMENT

- **1881781 COLLAPSIBLE MULTI-STREAM X-CART (2X4-BUSHEL) WITH 1889864 COVER**
Multi-stream option provides the ability to easily divide and sort materials, perfect for collecting and transporting linens and waste.



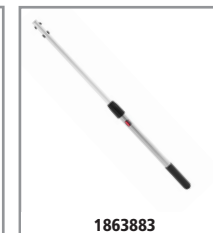
JANITORIAL

Compact and discreet appearance allows staff to blend into public areas.



- Compact for easy storage and transport within restrooms and small public areas
- Works great as a quick spill clean-up solution
- Large front pocket fits a sweeper or mop less than 14" wide
- Removable liners are quick and easy to change while the
- Teflon™ fabric protectant on inner and outer materials protects against water, oil and stains
- Perfect for Day Cleaning

- **1863888** 12" Gray Multipurpose Microfiber Cloth
- **FGQ85200WH00** 22" Multipurpose Flexible Microfiber Duster and Frame
- **1867396** 11" Microfiber Flexible Flat Mop Frame, Single-Sided and **FGQ889100BL00** Microfiber Flexi-Frame Damp Mop Cover
- **1863883** 20" to 40" Telescoping Handle



- **1867508** Executive Multi-Lingual Wooden Caution Sign, 2-Sided, Stainless
- **1863896** Executive WaveBrake™ Side-Press Mop Combo, Black
- **FG421588BLA** Executive Dual-Action Brushless Mechanical Sweeper



- **1881750 COLLAPSIBLE X-CART, (8-BUSHEL) WITH 1889864 COVER**
Industry-leading capacity of up to 220 lbs., the versatile Collapsible X-Cart system delivers reliable, long-lasting performance.



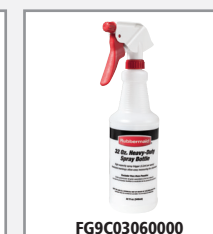
MAINTENANCE

Versatile design allows staff to efficiently service guest rooms and public areas.



- Compact for easy storage and transport into small repair areas
- Compact footprint compared to utility cart enables workers to discretely maneuver throughout the property
- Expandable pockets allow space for cleaning supplies so the worker can quickly clean up after a job
- Rigid adjustable dividers in the removable caddy keep tools and supplies organized Ideal for Maintenance

- **1863888** 16" Gray Multipurpose Microfiber Cloth
- **1863890** 12" Brown Multipurpose Microfiber Cloth
- **FG9C03060000** 32 oz.-Spray Bottle and Trigger



- **1867505** Executive Multilingual Caution Sign, 2-Sided, Black
- **1861211** Executive 24" Multisurface – Medium Sweep Push Broom



- **1881749 COLLAPSIBLE X-CART (4-BUSHEL) WITH 1889863 COVER**
Provides discreet collection of debris after a job.



QUICK CART SPECIFICATION GUIDE



Description	Executive Quick Cart – Large	Executive Quick Cart – Medium	Executive Quick Cart – Small
Quick Cart Product Number	1902465	1902466	1902467
Quick Cart Weight	18.00 lbs.	14.25 lbs.	12.25 lbs.
Quick Cart Outer Dimensions	16.50" L x 14.25" W x 25.00" H	16.50" L x 14.25" W x 21.00" H	16.50" L x 14.25" W x 17.00" H
Quick Cart Inner Dimensions	16.00" L x 12.50" W x 22.50" H	16.00" L x 12.50" W x 18.50" H	16.00" L x 12.50" W x 14.50" H
Maximum Weight Capacity (lbs)	60.00 lbs.	40.00 lbs.	30.00 lbs.
Internal Storage Capacity	2.60 ft ³	2.14 ft ³	1.68 ft ³
Quick Cart Caddy Product Number	1902468	1902468	1902459
Quick Cart Caddy Dimensions	14.00" L x 11.00" W x 5.50" H	14.00" L x 11.00" W x 5.50" H	10.50" L x 11.00" W x 5.50" H
Quick Cart Caddy Capacity	15.00 lbs.	15.00 lbs.	10.00 lbs.

QUICK CART CADDIES AND LINERS

CADDIES



REPLACEMENT LINERS



PLASTIC POCKET LINERS



No.	Color	Description
1902468*	Dark Gray	Executive Quick Cart Caddy, Large
1902459**	Dark Gray	Executive Quick Cart Caddy, Small
1919270***	Clear	Executive Quick Cart Plastic Pocket Liner
1902701	Black	Executive Quick Cart Replacement Liner, Large
1902702	Black	Executive Quick Cart Replacement Liner, Medium
1902703	Black	Executive Quick Cart Replacement Liner, Small

* Replacement for Medium and Large Executive Quick Carts.

** Replacement for Small Executive Quick Carts.

***Replacement for all Executive Quick Carts.

COLLAPSIBLE X-CART SPECIFICATION GUIDE



Description	Executive Collapsible X-Cart – 4-Bushel	Executive Collapsible X-Cart – 8-Bushel	Executive Collapsible X-Cart Multistream – 4-Bushel (2)
Product Number	1881749	1881750	1881781
Maximum Weight Capacity (lbs.)	220 lbs.	220 lbs.	220 lbs.
X-Cart Outer Dimensions	24.1" L x 18.2" W x 34" H	35.7" L x 24.1" W x 34" H	35.7" L x 24.1" W x 34" H

COLLAPSIBLE X-CART COVERS AND BAGS

COVERS



BAGS



No.	Color	Description
1881782	Black	Collapsible X-Cart Replacement Bag (for 1881749 and 1881781)
1881783	Black	Collapsible X-Cart Replacement Bag – 8 Bushels
1889863	Black	Collapsible X-Cart Cover (for 1881749)
1889864	Black	Collapsible X-Cart Cover (for 1881750 and 1881781)

www.rubbermaidcommercial.com | 1-800-347-9800 A *NewellRubbermaid* Brand

© 2015 by Rubbermaid Commercial Products LLC 8900 Northpointe Executive Drive, Huntersville, NC 28078

Teflon® is a registered trademark of DuPont used under license by Rubbermaid Commercial Products LLC.

RCP1040 REV 1/16