



Torfaen
Leisure Trust
Ymddiriedolaeth
Hamdden Torfaen

GETTING AHEAD OF RECYCLING LEGISLATION

HOW IMPLEMENTING A MULTI-STREAM RECYCLING SYSTEM HELPED TORFAEN LEISURE TRUST IMPROVE RECYCLING RATES AND GET AHEAD OF NEW RECYCLING LEGISLATION

With "Our Environment" one of Torfaen Leisure Trust's (TLT) strategic priorities and new workplace recycling laws for Wales around the corner, it was time for the leisure trust to upgrade its existing waste management systems.



Working with the experts from Rubbermaid Commercial Products (RCP), TLT has implemented multi-stream recycling systems across its five sites throughout the borough of Torfaen, **and is set to improve its recycling rate by an estimated 32%, and cut its waste management costs by 39%.**



**7 STREAMS
IMPLEMENTED**



39%
PROJECTED
COST
SAVINGS



32%
ESTIMATED
IMPROVEMENT IN
RECYCLING RATE

LEGISLATION LEADS THE WAY

NEW WORKPLACE RECYCLING LEGISLATION ISN'T FAR AWAY.



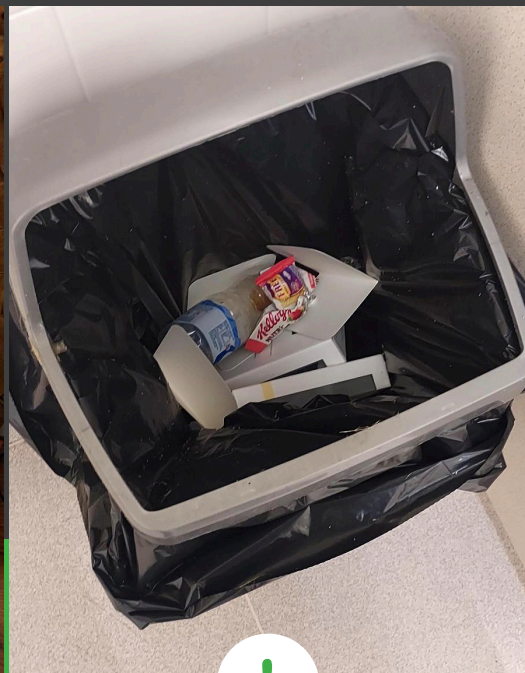
From 6th April 2024 in Wales, new rules on recycling will mean that businesses - including charities and public sector organisations - must separate waste for recycling or risk costly fines and potentially civil sanctions.

IDENTIFYING THE OPPORTUNITY

The first step in identifying how TLT could improve recycling and get compliant with the new laws was an in-depth site walk with the RCP team to see where improvements to processes and products could help the trust reduce the amount of waste sent to general disposal, and ultimately cut costs.



High potential for **improved waste separation** both front and back of house



Missing opportunities to **capture recyclable waste** in most areas



Lack of **standardisation, consistency and education** in waste separation leading to poor results

TRANSFORMATION TO A GREENER FUTURE

A total of seven waste streams (general waste, paper, card, cans, plastic bottles, food waste, and glass) were implemented across the facilities, with the appropriate streams introduced in each specific area.

The modular capability of the Slim Jim® Recycling Stations installed allow for this tailored yet consistent approach.

FRONT OF HOUSE

A lot of the waste produced is recyclable which means there is a huge opportunity to encourage leisure club members to separate their waste.

BACK OF HOUSE

In staff areas and other back-of-house zones, paper and card streams are more important.

OUTDOOR AREAS

Plaza® Containers were installed for waste separation in external areas. The durable bins withstand changing weather conditions.



VISIBILITY ADDS VALUE

The lack of standardisation and education in waste separation were impacting recycling rates across all of TLT's facilities. Customised TLT-branded dual language spine and billboard labels on the new bins, and consistent colour coding has created a clear and efficient system to help reduce cross-contamination of recyclable and non-recyclable materials, allowing for optimal waste separation.

VISIBLE RECYCLING STATIONS ALSO HELP HIGHLIGHT TO CUSTOMERS AND STAKEHOLDERS WHAT THE BUSINESS IS DOING TO IMPROVE SUSTAINABILITY.



“

Improving the sustainability of our operations and sites has long been a priority for TLT, and with new recycling legislation on the way in Wales from April 2024, we urgently needed to reassess our waste management processes.

The team at RCP helped us to identify where and how we could make improvements and the projections for our cost and waste savings were impressive.

Not only do the new recycling stations look smart at our centres, but they are also driving higher rates of recycling throughout the facilities. As well as making significant strides towards our sustainability targets, we're also cutting costs, so we are delighted with the results so far.”

Owen Thomas, General Manager, TLT

BUILDING A RECYCLING CULTURE

To support TLT with embedding a culture of recycling among staff and members, the team will have full access to RCP's **Love to Learn Recycling Portal**.

Free resources including online recycling training modules will help the business to recycle better and work towards their goals through increased knowledge and a shared drive towards a more sustainable future.



HOW CAN YOUR BUSINESS ALSO BENEFIT?

To find out more about how you can improve recycling rates in your facility, please get in touch with the RCP team using the details below.

As a first step, we'll arrange a 'waste walk' at your site where we'll audit your current processes and products to highlight where improvements are needed and project your waste and cost savings.

CommercialProductsUK@newellco.com | Rubbermaid.eu | 01283 688945



loverecycling.com



Let's do this together

f facebook/RCPEUR in linkedin/RCPEUR t twitter/RCPEUR